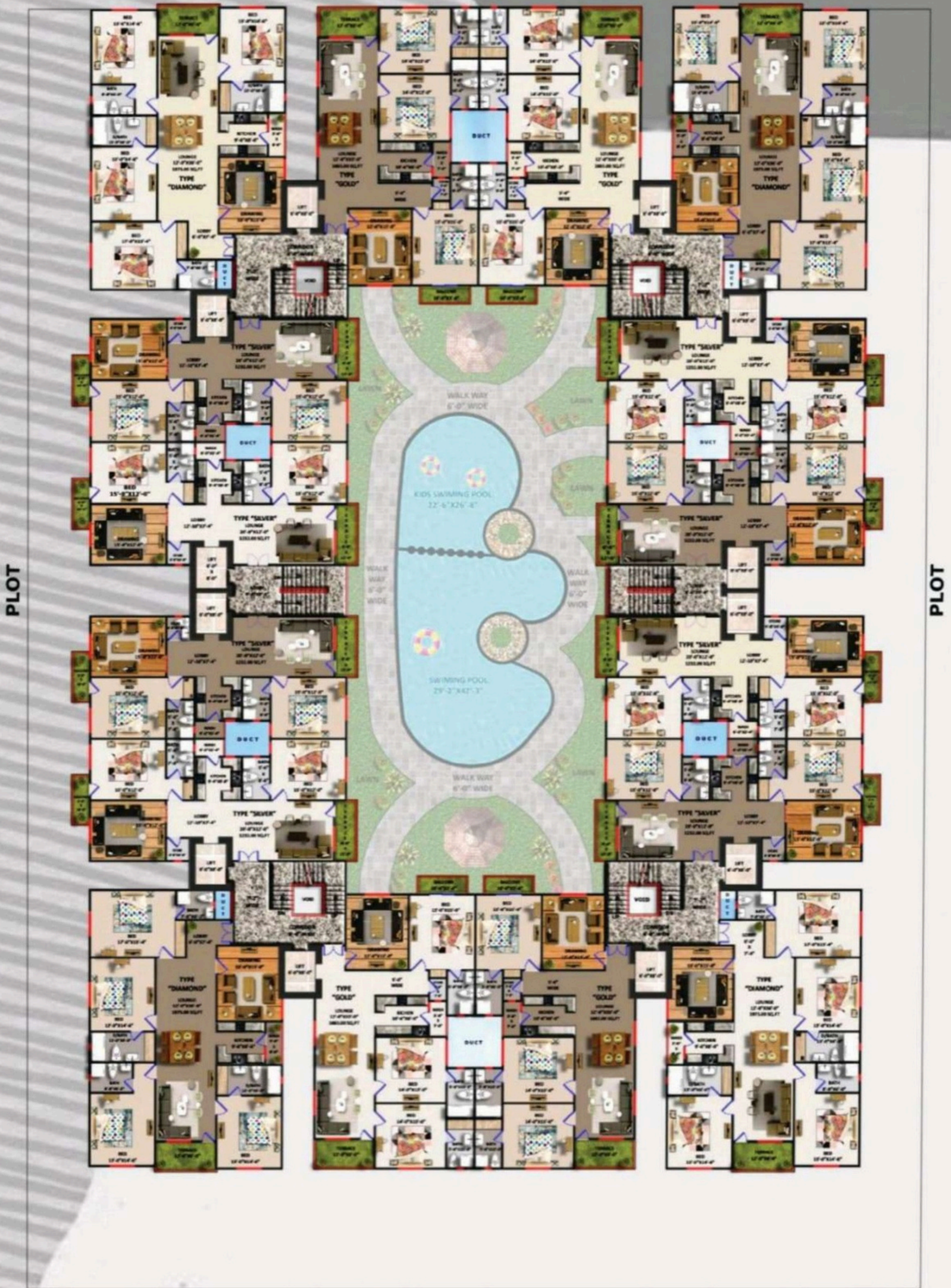




SHAYAN ICONIC PALACE



40'-0" WIDEROAD



PROJECT BY



SHAYAN ICONIC

80'-0" WIDEROAD

TYPICAL FLOOR PLAN (3RD TO 20TH FLOOR)

For Booking And Details
0305-1770658

SHAYAN ICONIC PALACE

TYPE " SILVER" 4 ROOMS APARTMENTS 1232.00 SQ. FT.



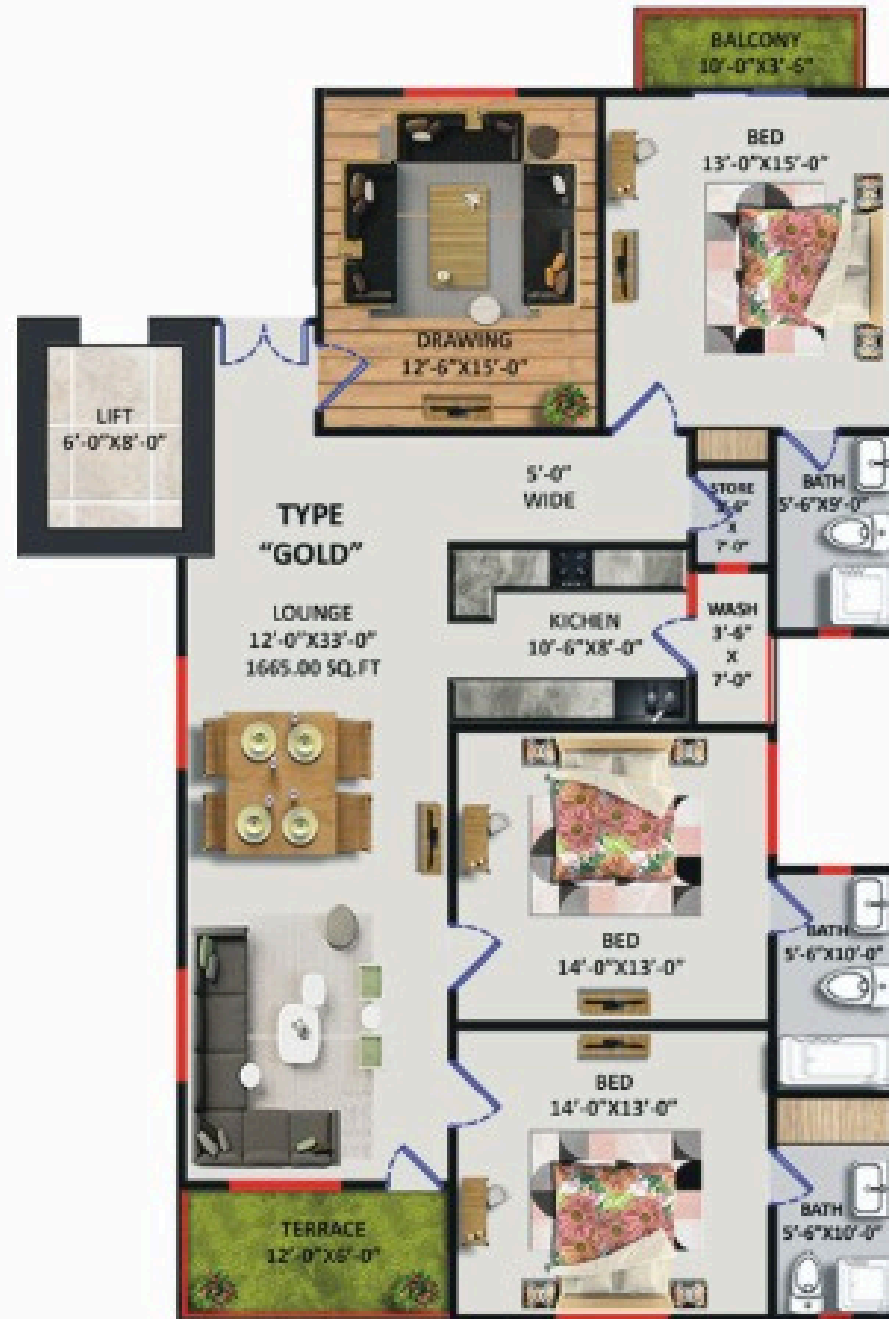
Mode of Payment	4 Rooms Apartment Amount in Rs.
Down Payment	6,000,000
Monthly Installments (500,000 x 20)	10,000,000
Half-Yearly Installments (1,500,000 x 3)	4,500,000
On Possession	2,000,000
Total	22,500,000

NOTE

- Documentation Charges for Lease & connections for Gas, Electricity, Water & Sewerage will be charged Extra. As & when demanded by the Company.
- Token amount validity only remains for 5 days.
- The allottee shall pay cost of documentation. Utility services, sub-lease charges to the developer promptly on demand.
- The allottee shall pay all installments on due dates as per 'Payment Schedule' All
- Installments shall be paid before 10th of each month.
- Extra charges for corner apartment: Rs. 350,000
- Extra charges for west open apartment: Rs. 350,000
- Extra charges for road facing apartment: Rs. 350,000

I, Here by declare that i have read and understood the booking terms and conditions and accept the same. If a presented cheque is bounced or not cleared due to any reason, the installment slip generated shall be regarded as invalid.

TYPE "GOLD" 5 ROOMS APARTMENTS 1665.00 SQ. FT.



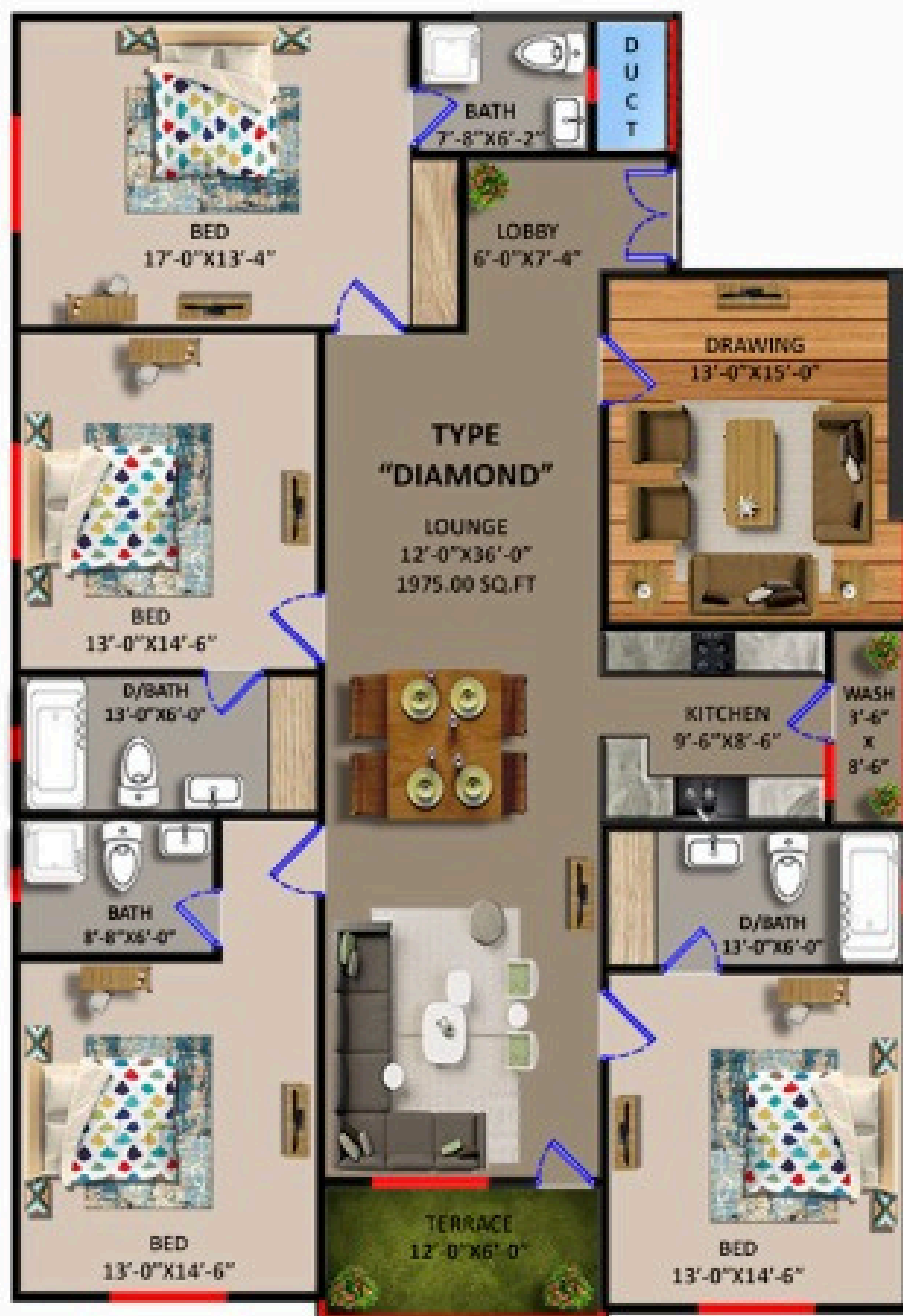
Mode of Payment	5 Rooms Apartment Amount in Rs.
Down Payment	12,000,000
Monthly Installments (650,000 x 20)	13,000,000
Half-Yearly Installments (1,500,000 x 3)	4,500,000
On Possession	3,000,000
Total	32,500,000

NOTE

- Documentation Charges for Lease & connections for Gas, Electricity, Water & Sewerage will be charged Extra. As & when demanded by the Company.
- Token amount validity only remains for 5 days.
- The allottee shall pay cost of documentation. Utility services, sub-lease charges to the developer promptly on demand.
- The allottee shall pay all installments on due dates as per 'Payment Schedule' All
- Installments shall be paid before 10th of each month.
- Extra charges for corner apartment: Rs. 350,000
- Extra charges for west open apartment: Rs. 350,000
- Extra charges for road facing apartment: Rs. 350,000

I, Here by declare that i have read and understood the booking terms and conditions and accept the same. If a presented cheque is bounced or not cleared due to any reason, the installment slip generated shall be regarded as invalid.

TYPE "DIAMOND" 6 ROOMS APARTMENTS 1975.00 SQ. FT.



Mode of Payment	6 Rooms Apartment Amount in Rs.
Down Payment	12,500,000
Monthly Installments (800,000 x 20)	16,000,000
Half-Yearly Installments (1,500,000 x 3)	4,500,000
On Possession	4,500,000
Total	37,500,000

NOTE

- Documentation Charges for Lease & connections for Gas, Electricity, Water & Sewerage will be charged Extra. As & when demanded by the Company.
- Token amount validity only remains for 5 days.
- The allottee shall pay cost of documentation. Utility services, sub-lease charges to the developer promptly on demand.
- The allottee shall pay all installments on due dates as per 'Payment Schedule' All
- Installments shall be paid before 10th of each month.
- Extra charges for corner apartment: Rs. 350,000
- Extra charges for west open apartment: Rs. 350,000
- Extra charges for road facing apartment: Rs. 350,000

I, Here by declare that i have read and understood the booking terms and conditions and accept the same. If a presented cheque is bounced or not cleared due to any reason, the installment slip generated shall be regarded as invalid.



SHAYAN
BUILDERS

For Booking and Details
021-34947006 | 021-34937006
www.shayanbuilders.com